

EXPLORE, TRY...

CHANGE!

WE OFFER YOU...

FLEXIBILITY!

QUALITY!

RANGE!


SAVINGS!

WHO WE ARE

We are part of the **ULMA Group**, one of the **largest Business Groups in northern Spain** which has been on the market for more than 50 years and has a clear commitment to **Innovation, Employment and Added Value**.







The ULMA Group, one of the largest business groups in the north of Spain

			
4.500	> 700	8	80
STAFF	Turnover of 700 million €	We have 8 companies	Present in 80 countries

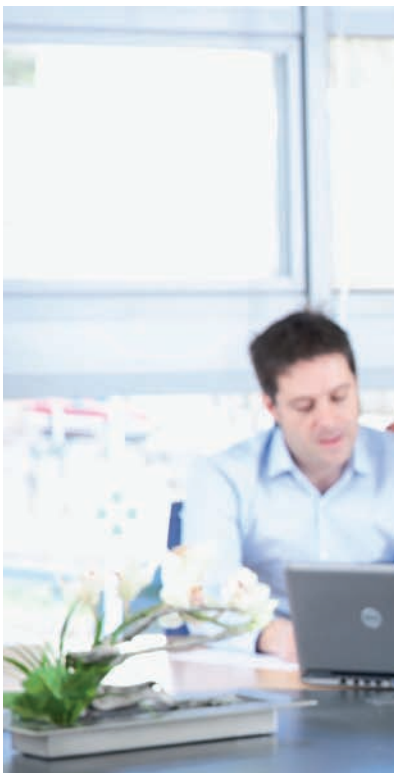
We provide solutions in 5 continents

Mondragon

			
80.321	14.081	289	15
STAFF	Turnover of 14.081 million €	Companies	Technological Centres Own university



OUR SOLUTIONS AROUND THE WORLD

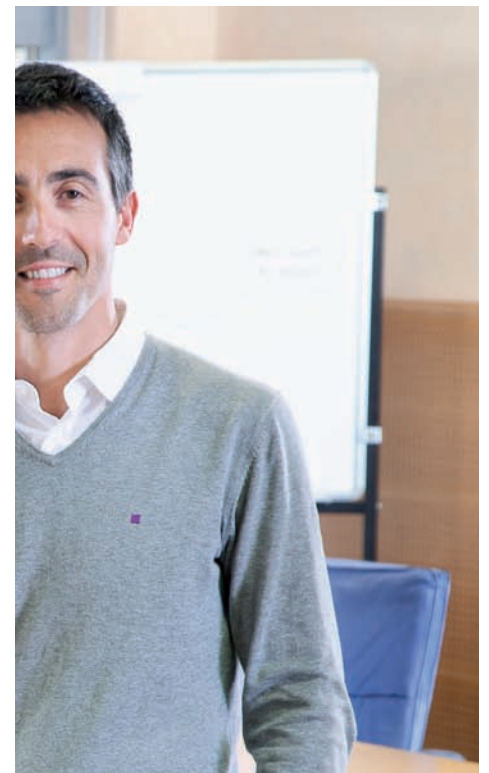


ULMA Architectural Solutions is a company which is specialised in **polymer concrete drainage solutions** with more than 25 years' experience on the market designing, manufacturing and commercialising drainage systems.

We currently have an **important distribution network spread in countries all around the world** such as Germany, France, Brazil, Italy, Mexico, Poland, Norway, Benelux, England, Austria, Dubai, Russia, Algeria and Chile, and Italy.

What are the advantages of our Drainage Systems?

Our experience with polymer concrete and the constant investment in product R&D based on optimisation of the material enables us to provide a very **competitive range of channels**. The linear drainage system, along with its prefabricated condition, also allows our customers to **reduce the timeframe** with a major saving in labour. All our products have been developed and certified in accordance with Standard **EN-1433**.



KOMPAQDRAIN® CHANNEL

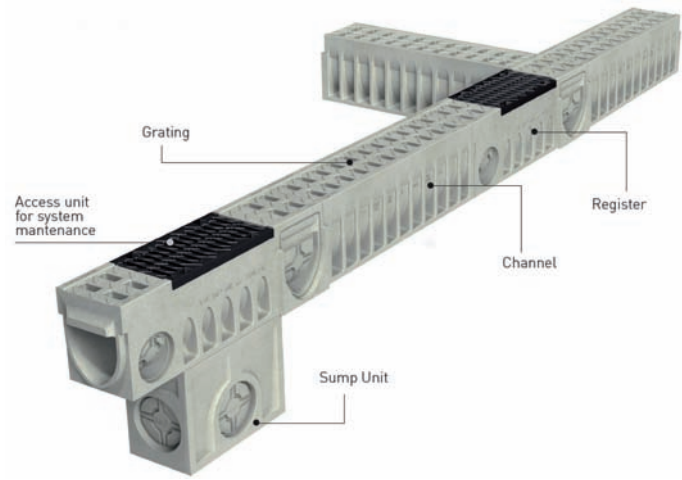
•Specially designed for areas with high traffic density by **ULMA Architectural Solutions**, specialists in drainage system, this novel compact channel made of polymer concrete, is suitable up to load class F900, according to standard EN-1433.

Motorways, airports, service stations and other intense traffic areas require high drainage and maximum safety, requirements to which **KOMPAQDRAIN®** responds with a combination of features that make it unique on the market.



ADVANTAGES OF THE SYSTEM

1. COMPACT
2. LONG-LASTING AND RESISTANT
3. SELF-CLEANING
4. MAXIMUM SECURITY
5. QUICK INSTALLATION



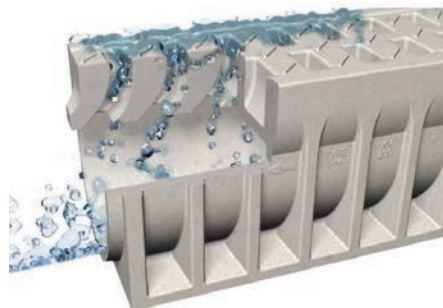
Max Flow® SYSTEM

The original curved design of the inlets, together with the non-slip surface and water router, achieve the novel **Max Flow®** effect, increasing the water speed and the drainage capacity. More over, the progressive widening of the orificies helps the waste pass through more easily. Therefore **KOMPAQDRAIN®** can drain the same volume of water with a smaller channel.

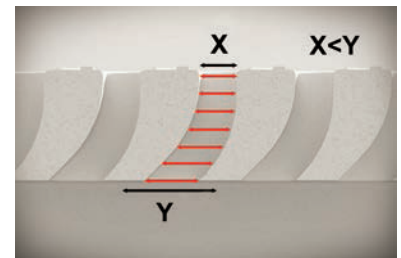
KOMPAQDRAIN® meets all requirements of the EN-1433 international standard of quality and reliability.



CURVED DESIGN OF THE INLETS



IT INCREASES THE WATER ENTRY SPEED AND THE DRAINAGE CAPACITY



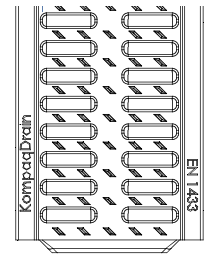
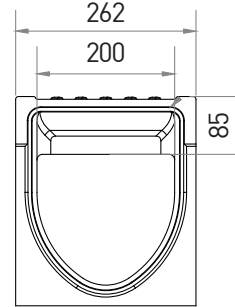
PROGRESSIVE WIDENING TO PREVENT DIRT BLOCKAGE

KOMPAQDRAIN® PRODUKT RANGE

CITY



- Grating specially designed for compliance with European standards of pedestrians uses
- Main application: city and peatonal areas

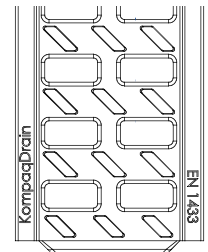
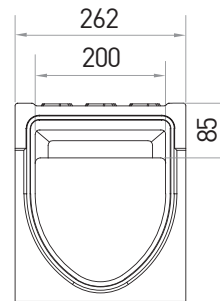


CITY D400

TRAFFIC



- Grating specially designed for heavy traffic areas.
- Main application: highways

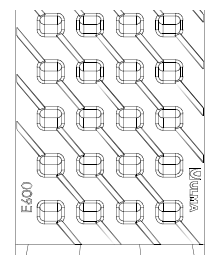
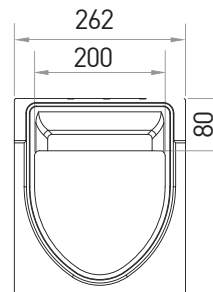


TRAFFIC D400

INDUSTRY



- Inverted anti-slippery surface, without protuberances
- Grating with small holes, specially designed for forklifts and warehouses

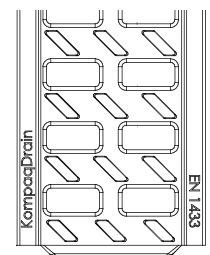
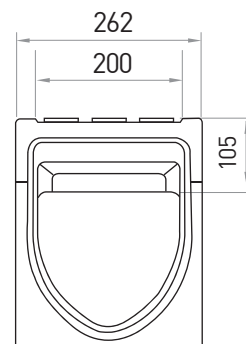


INDUSTRY E600

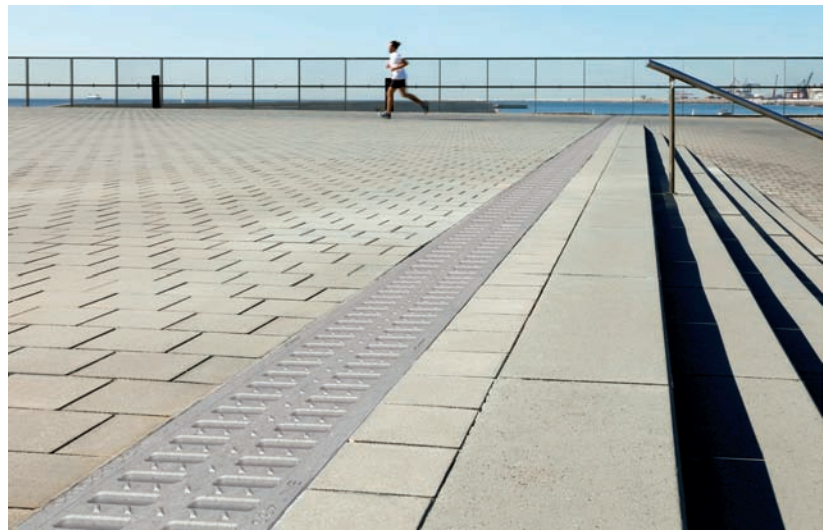
CIVIL



- Grating specially designed for highest load classes
- Main applications: civil works and airports



CIVIL F900



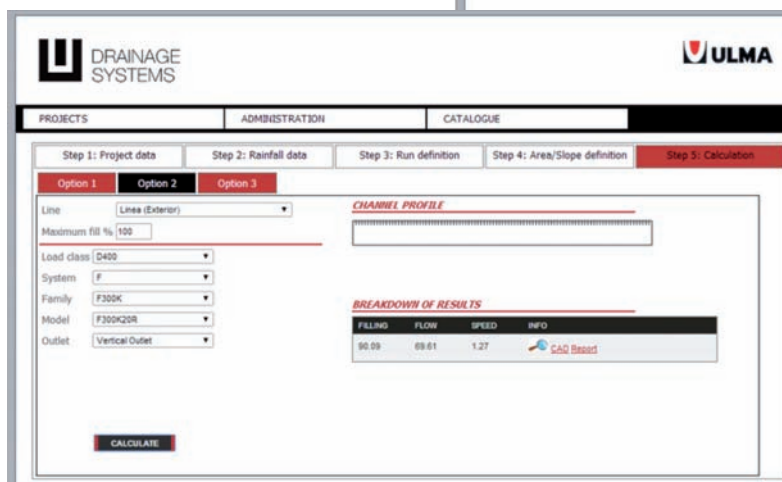
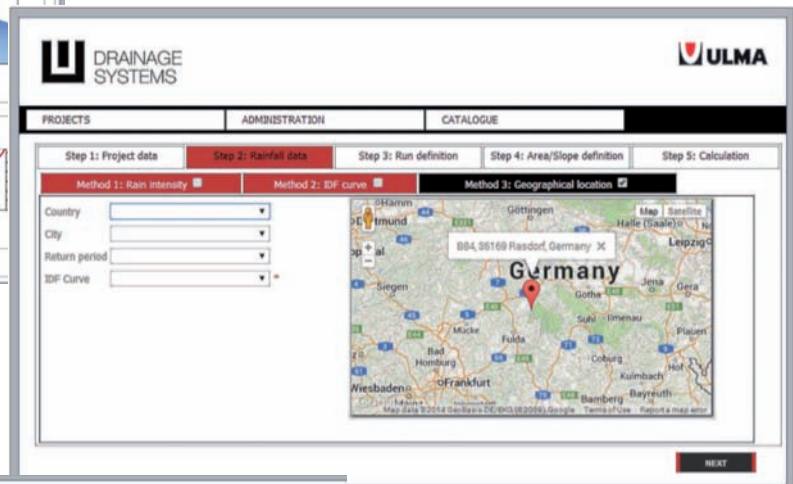
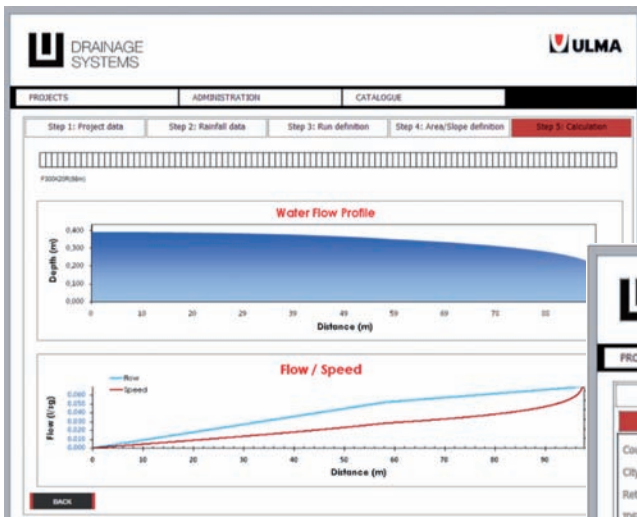
HYDRAULIC CALCULATION

The ULMA Architectural Solutions Hydraulic Calculation Program

To ensure that the drainage systems proposed are the most suitable ones, ULMA Architectural Solutions puts at your disposal a computer program which affords the possibility of carrying out a hydraulic calculation for each project.

OPTIMAL DRAIN

by **ULMA**



MULTIV+ MULTIPURPOSE CHANNEL

Advantages of the multi V+ optimized solution:

- Optimized V-shaped section
- **rapidlock**® fastening system
- Mechanical stability, with 8 fastening points
- Multiple fastening options
- Also available with cast iron edges



1 Optimized V-shape
Optimized for higher hydraulic efficiency.

2 rapidlock® Fastening System
Fast, fully manual locking

3 Mechanical stability, with 8 fastening points
Higher stability and stress distribution

4 Multiple fastening options

No marks in inner surface
Prevent turbulences improving drainage capacity.

Anti-shunt mechanism
Enables perfect grating alignment. Automatic adjustment.

Grooves in compliance with EN 1433 Standard

Directional grooves
Drive water inwards, increasing intake

Non slippery grating
Special geometry to improve the grip and water absorption.

Vertical locking tab
Prevents any floating effect. Easier to install.

Uniformly distributed arches
Improves load distribution

Smooth edge
REAL thickness of 2+2 mm, as required by EN- 1433 Standard. No breaking protective zinc layer. Avoids water accumulation, preventing corrosion.

Rounded shapes
Prevents stress concentrations

Smooth inside finishing
Improves hydraulic capacity.

Channel body markings
According to EN 1433 Standard .

Vertical outlets
Preformed for easier opening.

Prejoined sealing point
Easier seal installation.

Male and female vertical and horizontal alignment
For easier installation.

MULTIPLE FASTENING OPTIONS
Rapidlock® and screw-fastened systems can be replaced and combined.

*Several grating options.

SOLUTIONS FOR AIRPORTS

ULMA Architectural Solutions is the official supplier of two of the largest airport operators in the world; we are talking about AENA (the number one operator worldwide) and INFRAERO (Brazilian airport operator). Barajas-Madrid Airport, Malaga Airport, Guarulhos Airport in São Paulo, Galeano in Rio de Janeiro and Brasilia Airport are among the most emblematic projects in which we have provided advice and specific drainage solutions.

WE ARE EXPERTS IN PROVIDING DRAINAGE SOLUTIONS FOR AIRPORTS

These channels are designed for heavy traffic areas and especially for sections where the grilles sustain large axial forces from the manoeuvres and braking performed on them. The channels are reinforced with galvanized steel profiles on the sides.

It is possible to incorporate a continuous slope of 2.5% and/or cascading. Available with modular function grilles with load rating F900.



Guarulhos Airport.
São Paulo



Malaga Airport

**Over 2 million lm
of channels
installed in
airports
worldwide.**



Brasilia Airport



Rio de Janeiro Airport

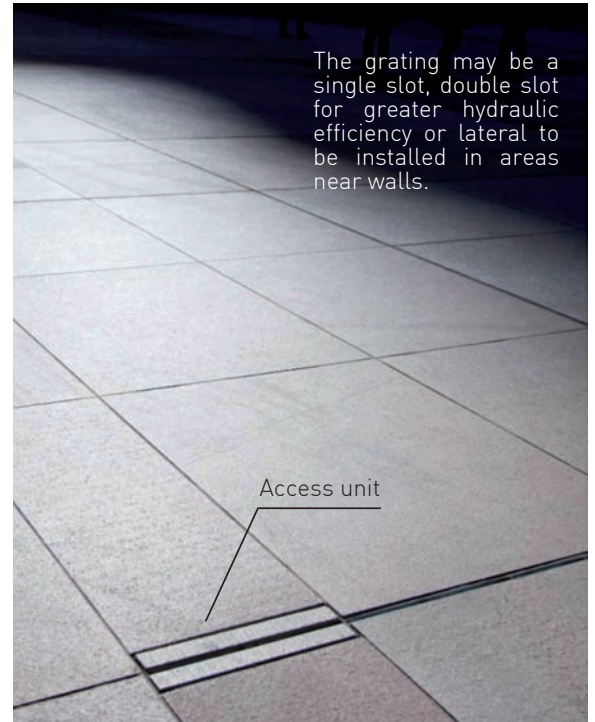
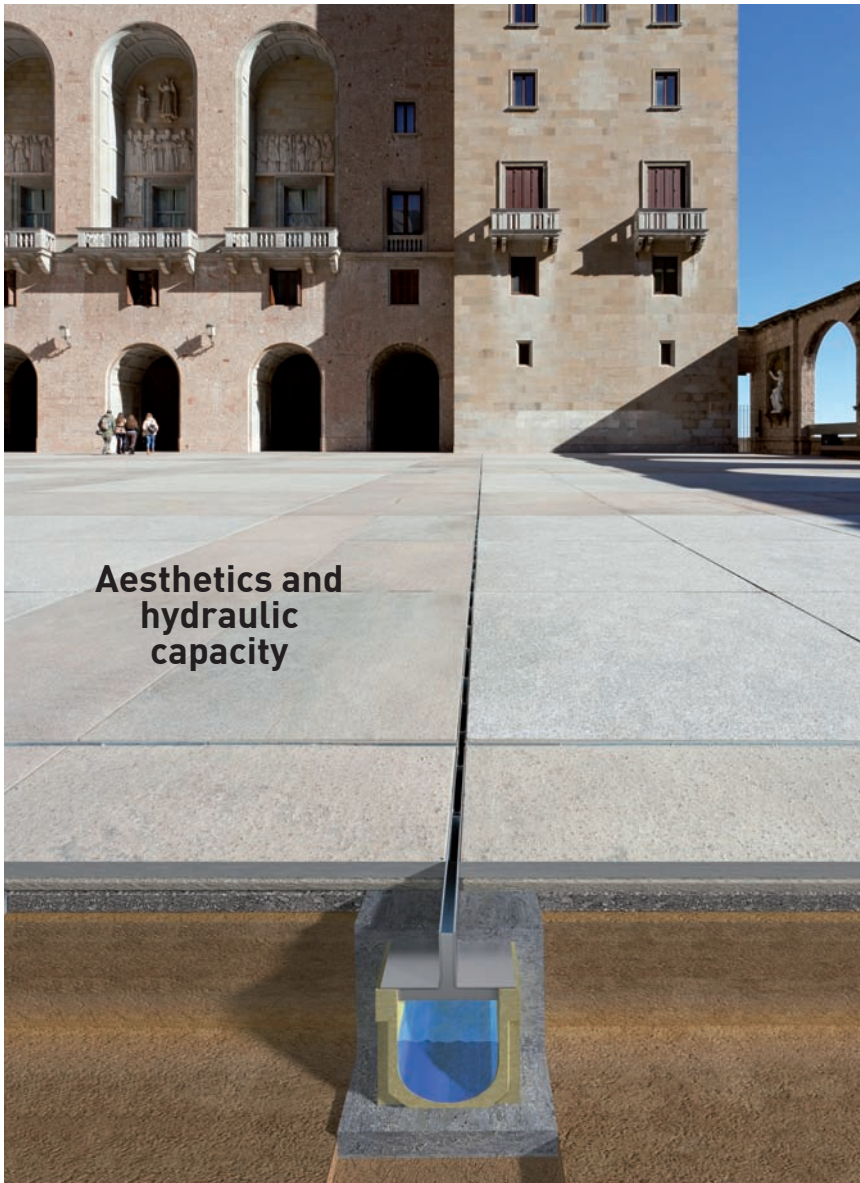


Mexico Airport



Barajas-Madrid Airport

SINGLE SLOT GRATING



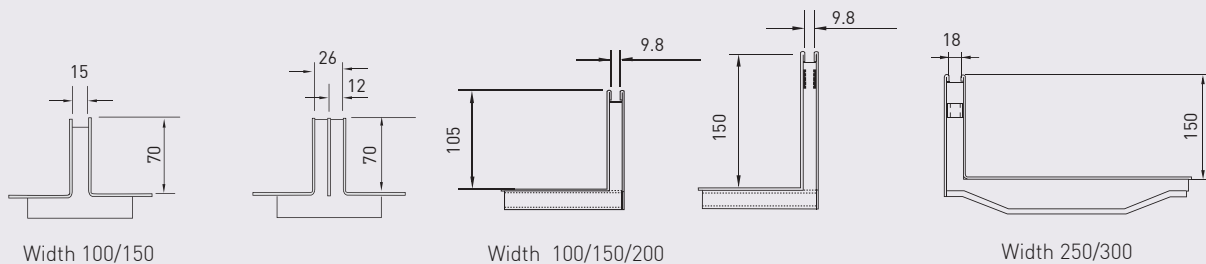
The grating may be a single slot, double slot for greater hydraulic efficiency or lateral to be installed in areas near walls.

It is an inverted-T shape grating model that mainly stands out for its look as it fits perfectly into the flooring (whether it is concrete, cobblestone or tile), achieving total mimetization in the urban landscape.

The single slot grating forms part of an integral system which consists of a grating, channel and set of inspection chambers for an optimum maintenance of the drainage line. It is adaptable to different channel models and available in galvanised and stainless steel finish.

Withstands a load class up to D-400 according to Standard EN1433, suitable for road surfaces, pedestrian streets, hard shoulders and parking areas for all kinds of road vehicles.

GRAITINGS' DIMENSIONS

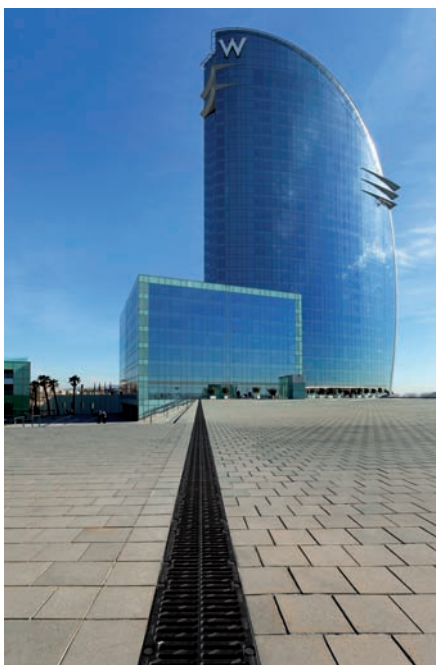


F SYSTEM CHANNELS FOR HEAVY DUTY APPLICATIONS

The F system is specifically designed for heavy traffic areas. Areas such as service stations, loading and unloading areas, ports, warehouses, airports, public roads, and heavy vehicle parking areas.

As a result, all channels in the F range are reinforced with galvanized steel or cast iron edges. This system is available up to the F900 load class and is ideal for public works.

- Length: 700 mm
- 8 Bolt locking system
- Width: 494 mm



HOTEL VELA
Barcelona, SPAIN



GUARULHOS AIRPORT, São Paulo, BRAZIL



ULMA
AROUND THE WORLD



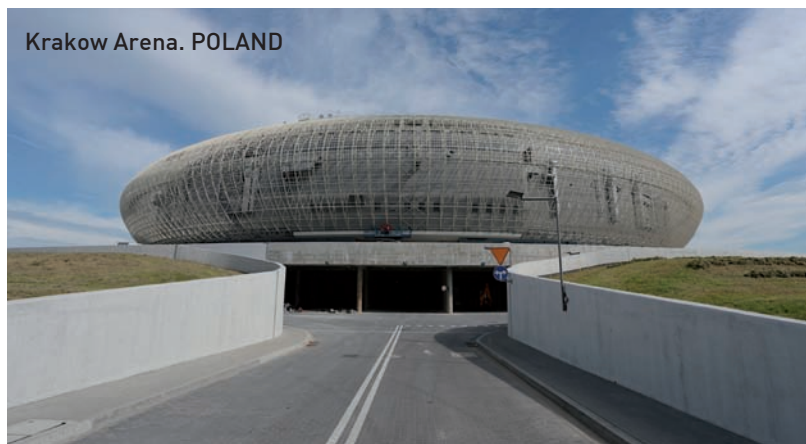
Orleans Hospital. FRANCE



The Grove hotel Golf Club.
ENGLAND



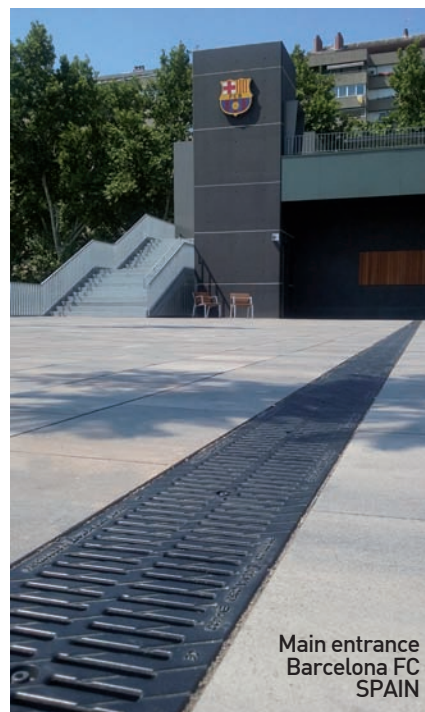
Design Center.
Barcelona.
SPAIN



Krakow Arena. POLAND



Urbanisation
in Vienna.
AUSTRIA



Main entrance
Barcelona FC
SPAIN



Mexican Football Federation.
MEXICO

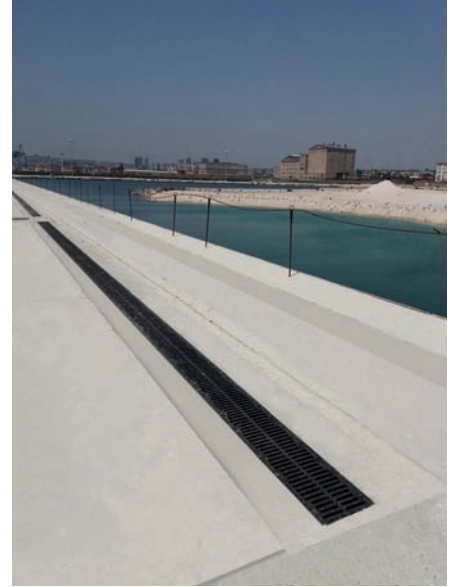
ULMA
AROUND THE WORLD



Siegen's train station, GERMANY.



Tom Jobim Airport. BRAZIL



Port of Naples, ITALY



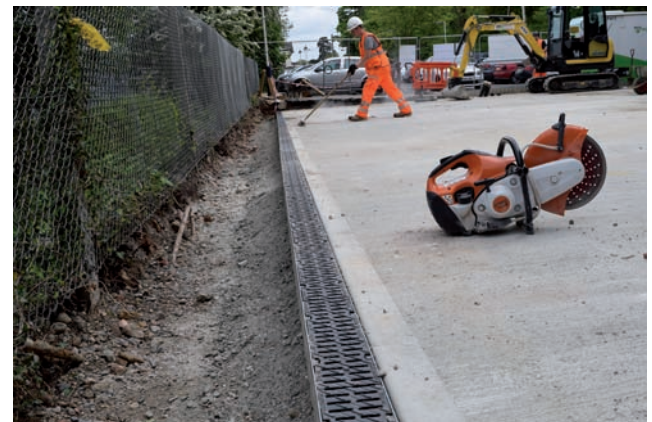
Porsche, Belgrade. SERBIA



Mirror of the Water, Nice, FRANCE



Beauval Zoo Hotel. FRANCE



Haslemere Station. ENGLAND